

Product Specification

Operating voltage range: DC4.5-20V

Quiescent Current: <60uA

Level output: High 3.3V / Low 0V

Trigger: reusable trigger (default)

Delay Time: The default 8S + -30%

Board Dimensions: 10 * 23mm

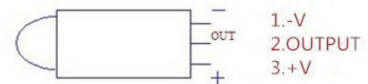
Induction angle: <100 degrees cone angle

Sensing distance: 3 meters

Working temperature: -20 to +80 degrees

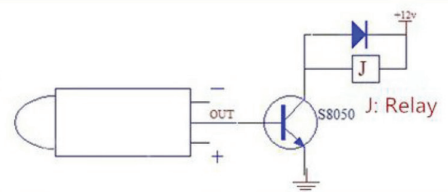
Sensor Lens Dimensions: Diameter 10mm

1.Interface



2.DC Load

Project 1



3.DC Load

Project 2

